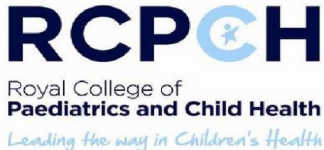
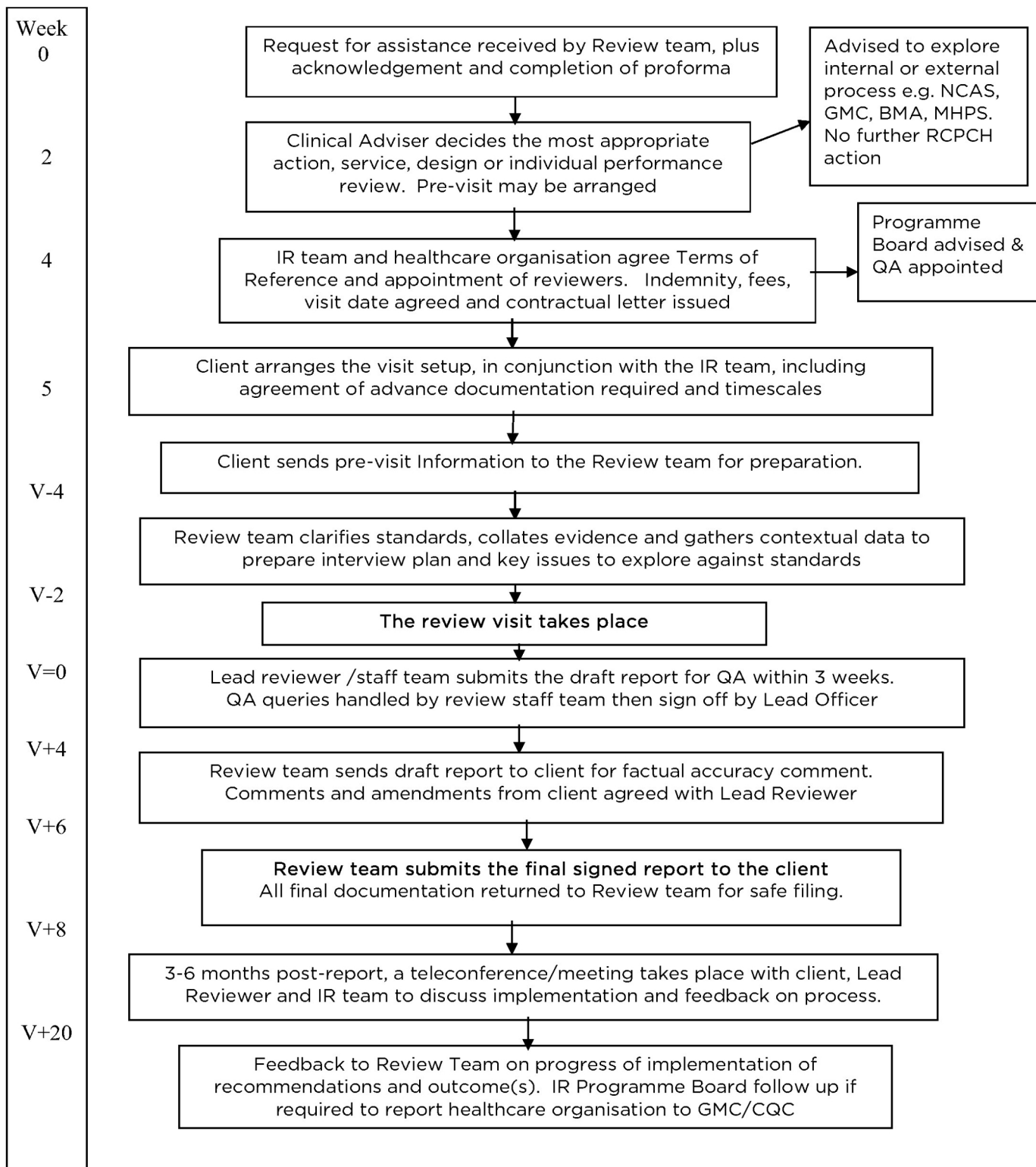


# 1 The review process

	<b>Invited Reviews Programme</b>
	<b>Process Flow Chart</b>



able to use them fluently in a review – the remaining documents provide details of standards and policy relevant to specific areas of practice. The IR team will maintain the standards list up to date; please notify them if revisions are required.

## **5 Clinical Standards**

For reviews focussing on specific service areas and clinical activity (such as emergency care or safeguarding) at least one member of the review team will be recruited with specialist knowledge, and will identify any specific current standards and guidance against which the review should be conducted. A full listing of relevant NICE and DH guidance and standards are available on [RCPCH webpages](#) relating to clinical standards, and the Invited Reviews team has prepared a specific summary document providing details of all the currently-used standards – please ask for a copy if you would like one.

## **6 NHS Policy briefing including child protection**

Reviews of services will always need to be considered within the local context of commissioning, planning and historical configuration. One of the criteria for reviewer selection is an awareness and understanding of recent national and strategic changes to the NHS and the opportunities and challenges these present, together with the ability to contextualise these in relation to the service under review.

The RCPCH Policy team keeps up-to-date with current developments in the NHS across the UK. Materials and updates are available through them as well as the RCPCH [policy](#) and [service configuration](#) pages on the College website. In addition, regional training advisers and regional council representatives should be familiar with local circumstances and, where appropriate, can provide local context. All members of the review pool will be invited to subscribe to the Clinical Leads Bulletins

A separate set of [webpages](#) provides up-to-date policy guidance on child protection issues and advice.

A helpful video of the NHS structure in England can be found at:

<http://www.kingsfund.org.uk/projects/urgent-emergency-care/alternative-guide-urgent-and-emergency-care-system-england>

## **7 Interview schedule and tips**

The Trust or client sets up the interviews based on guidance from the IR team; The Clinical or Medical Director should usually be first to set the scene before any other staff.

### **7.1 Interview structure**

The Lead Reviewer makes the introductions, thanks the interviewees for attending, apologises for any delays and checks receipt of the 'flyer' beforehand. Understanding of the background to the review is usually checked and reiterated for clarity.